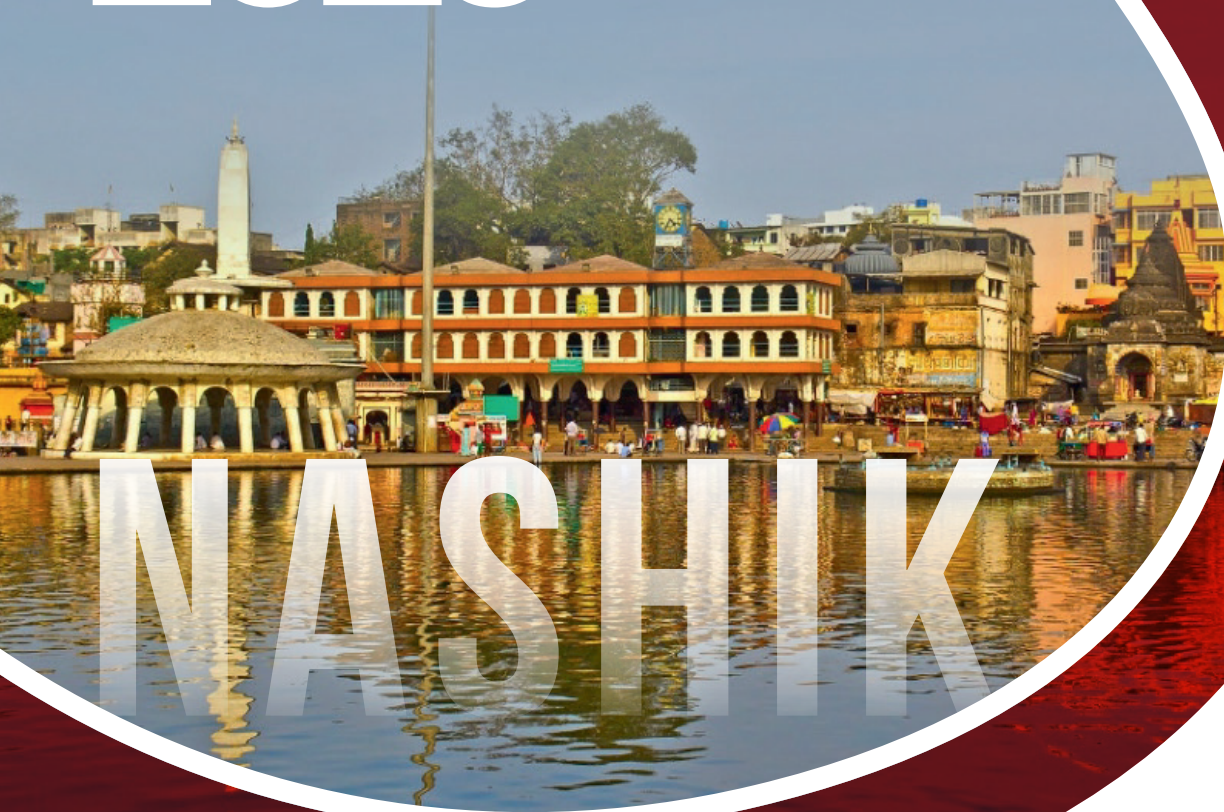


MAHA ENDOCON 2026



10 & 11
JANUARY 2026

RADISSON BLU, NASHIK



Welcome Message



Dear Esteemed Delegate,

Warm greetings from the Organising Committee of **MAHAENDOCON 2026!**

It gives us immense pleasure to invite you to the MAHAENDOCON 2026, the flagship annual conference of the Maharashtra Chapter of the Endocrine Society of India, scheduled to be held on **10th & 11th January 2026 at Hotel Radisson Blu, Nashik.**

Following the overwhelming success of MAHAENDOCON 2024 in Pune, where vibrant academic exchange met enthusiastic participation, we are excited to continue this tradition of excellence. This year's conference promises an even more enriching experience, bringing together endocrinologists, physicians, diabetologists, and healthcare professionals from across Maharashtra and beyond.

We request you to block your dates and register early to be a part of this academic celebration. Let us come together once again to strengthen our knowledge, connect with colleagues, and contribute to the growth of endocrinology in Maharashtra.

Looking forward to welcoming you in **Nashik!**

Warm Regards,

Organising Committee,
MAHAENDOCON 2026



Why Attend MAHAENDOCON 2026? _____

- **Comprehensive Scientific Agenda**

Agenda featuring clinical case discussions, interactive debates, keynote lectures, and panel sessions.

- **Esteemed Faculty**

Faculty from leading institutions across India sharing their insights and updates on advances in endocrinology.

- **Focused Learning**

Learning on practical aspects of endocrine disorders relevant to day-to-day practice.

- **Networking Opportunities**

Networking opportunities with peers, mentors, and experts in a serene and accessible setting.

Registration Packages



NON RESIDENTIAL REGISTRATION

CATEGORY	From 1st Sept to 31st Oct 2025	From 1st Nov to 30th Nov 2025	From 1st Dec to 31st Dec 2025	From 1st Jan 2026 Onwards
Delegates	7000 + 18% GST INR 8260/-	8000 + 18% GST INR 9440/-	9000 + 18% GST INR 10620/-	11000 + 18% GST INR 12980/-
PG Students	5000 + 18% GST INR 5900/-	6000 + 18% GST INR 7080/-	7000 + 18% GST INR 8260/-	8000 + 18% GST INR 9440/-
Accompanying Person	5000 + 18% GST INR 5900/-	6000 + 18% GST INR 7080/-	7000 + 18% GST INR 8260/-	8000 + 18% GST INR 9440/-

REGISTRATION FEE INCLUDES

Non Residential Registration for the MAHAENDOCON 2026, Lunches on 10th & 11th January 2026, Banquet Dinner on 10th January 2026, Entry to Trade exhibitions, & 18% GST charges as applicable.

RESIDENTIAL REGISTRATION

(2 Nights & 3 Days - Check In 9th January & Check out 11th January 2026)

CATEGORY	From 1st Sept to 31st Oct 2025	From 1st Nov to 30th Nov 2025	From 1st Dec to 31st Dec 2025	From 1st Jan 2026 Onwards
Delegates on Twin Sharing	17000 + 18% GST INR 20060/-	18000 + 18% GST INR 21240/-	19000 + 18% GST INR 22420/-	21000 + 18% GST INR 24780/-
Delegates on Single Occupancy	25000 + 18% GST INR 29500/-	26000 + 18% GST INR 30680/-	27000 + 18% GST INR 31860/-	29000 + 18% GST INR 34220/-
Delegates with 1 Accompanying Person	32000 + 18% GST INR 37760/-	33000 + 18% GST INR 38940/-	34000 + 18% GST INR 40120/-	36000 + 18% GST INR 42480/-

REGISTRATION FEE INCLUDES

Residential Registration for the MAHAENDOCON 2026, Breakfast on 10th & 11th January 2026, Lunches on 10th & 11th January 2026, Banquet Dinner on 10th January 2026, Visit to Trade exhibitions & 18% GST charges as applicable.

Room Check in on 9th January 2026 (1500 hrs) & Check out on 11th January 2026 (12 noon)

Registration Packages



RESIDENTIAL REGISTRATION

(1 Night & 2 Days - Check In 10th January & Check out 11th January 2026)

CATEGORY	From 1st Sept to 31st Oct 2025	From 1st Nov to 30th Nov 2025	From 1st Dec to 31st Dec 2025	From 1st Jan 2026 Onwards
Delegates on Twin Sharing	12000 + 18% GST INR 14160/-	13000 + 18% GST INR 15340/-	14000 + 18% GST INR 16520/-	16000 + 18% GST INR 18880/-
Delegates on Single Occupancy	16000 + 18% GST INR 18880/-	17000 + 18% GST INR 20060/-	18000 + 18% GST INR 21240/-	20000 + 18% GST INR 23600/-
Delegates with 1 Accompanying Person	22000 + 18% GST INR 25960/-	23000 + 18% GST INR 27140/-	24000 + 18% GST INR 28320/-	26000 + 18% GST INR 30680/-

REGISTRATION FEE INCLUDES

Residential Registration for the MAHAENDOCON 2026, Breakfast on 11th January 2026, Lunches on 10th & 11th January 2026, Banquet Dinner on 10th January 2026, Visit to Trade exhibitions & 18% GST charges as applicable.

Room Check in on 10th January 2026 (1500 hrs) & Check out on 11th January 2026 (12 noon)

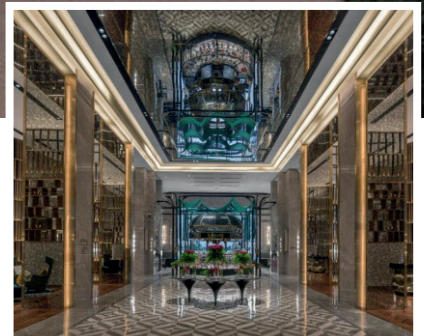
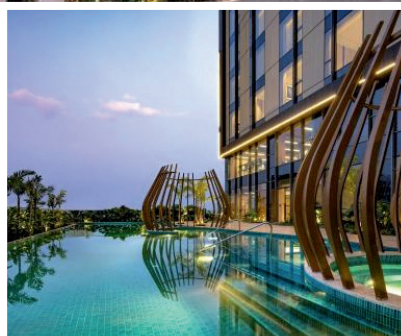
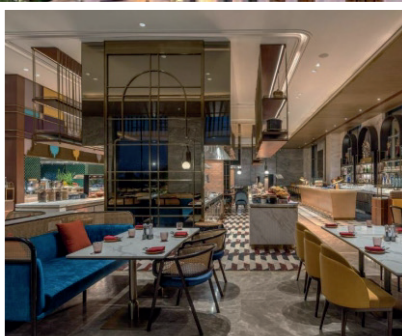
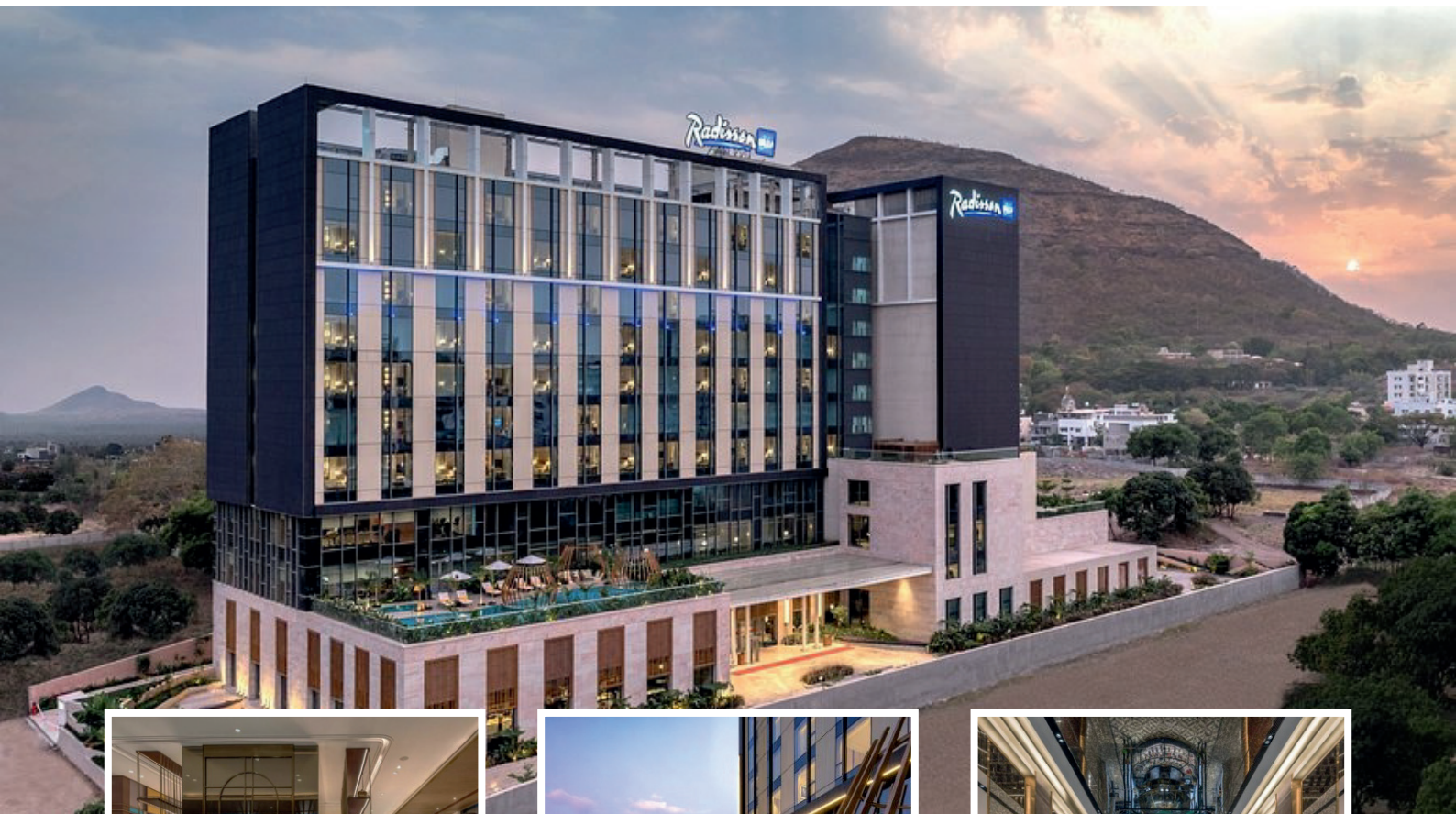
CANCELLATION POLICY

- Registration once done cannot be cancelled, transferred or refunded.

About the Venue



Nestled amidst the hills of Nashik, Hotel Radisson Blu offers the perfect backdrop for a rejuvenating academic gathering. With state-of-the-art conference facilities and renowned hospitality, it promises a comfortable and memorable experience for all attendees.



Conference Secretariat: RNS Events & Exhibitions

Shop No. 6, Post Office Building, Chafekar Bandhu Marg, Behind Khandoba Mandir, Mulund East, Mumbai - 400081. Omkar Mahadik - 91363 63581 | Email: projects@rnsevents.com